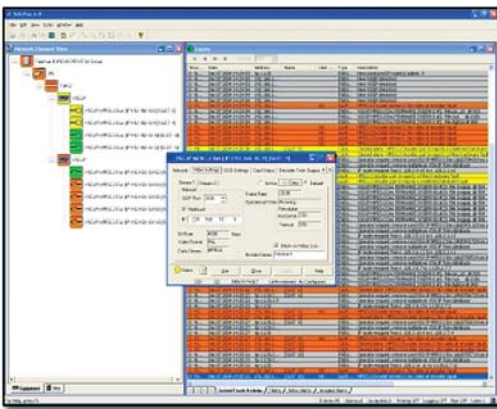
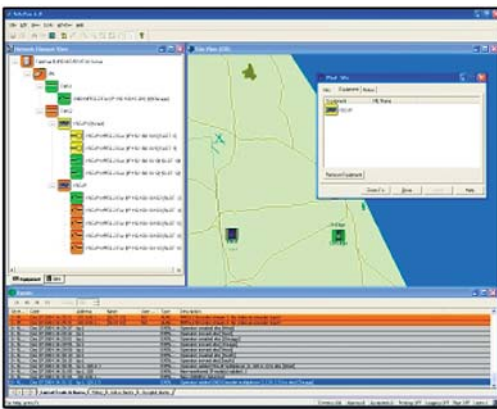


TeleVue™ i-VOLUTION™ NMS

Today's advanced video surveillance networks must be reliable, efficient, and easy to maintain if they are to be effective. Impath addresses this challenge with i-Volution NMS, an integrated, easy to use management system that gives network managers vital, real-time information about the health of their network. i-Volution NMS provides a concise and in-depth view of each network element and connection in a simple and intuitive graphical format. Managers can easily and quickly evaluate network performance to determine if and where attention is needed, thus reducing "Mean Time To Recovery".



Equipment View



Site View

i-Volution NMS supports

- i1000 Encoder & Decoder
- i1200 Multimedia Encoder and Decoder
- i1400 Quadrimedia Encoder
- ! i4000 Series Encoder
- VSG & VSG-L Video Surveillance Gateway Encoder and Decoder

Device Management

i-Volution NMS provides real-time monitoring and control of i-Volution devices located within an Impath video surveillance network. NMS operations are simplified via intuitive graphical user interfaces, color coded icons, automated alarms and Geographic Information System (GIS) mapping for the more advanced surveillance applications.

Site Management

i-Volution NMS provides the ability to group network elements by site location versus displaying them as individual icons. This simplifies the graphical display and provides a quick and efficient means of identifying locations where device/network failures have occurred. When events are detected, the relevant site icon automatically changes color for easy identification. With simple point and click of a mouse, the site icon can then be opened to identify the operational status of associated network elements by color code and severity of faults detected. Actions can then be taken to correct the fault.

Site locations can be overlaid onto GIS, BMP, or JPEG maps specific to customer's network application. i-Volution NMS provides a comprehensive set of GIS maps; customized GIS maps and bit maps can also be imported if required.

System Events and Alarms

i-Volution NMS provides real-time monitoring of system events and alarms, allowing network operators to easily determine which area of the network is affected and the priority of the action to be taken.

i-Volution NMS also provides a system log of all status changes detected in the network. These can be viewed on the management system and/or stored on a hard drive for future reference.

System Events and Alarms can optionally be forwarded to 3rd Party Enterprise Management Systems via standards-based SNMP.

Central Management Reporting

i-Volution NMS can generate network specific reports on system events, alarms, configuration and equipment inventory.

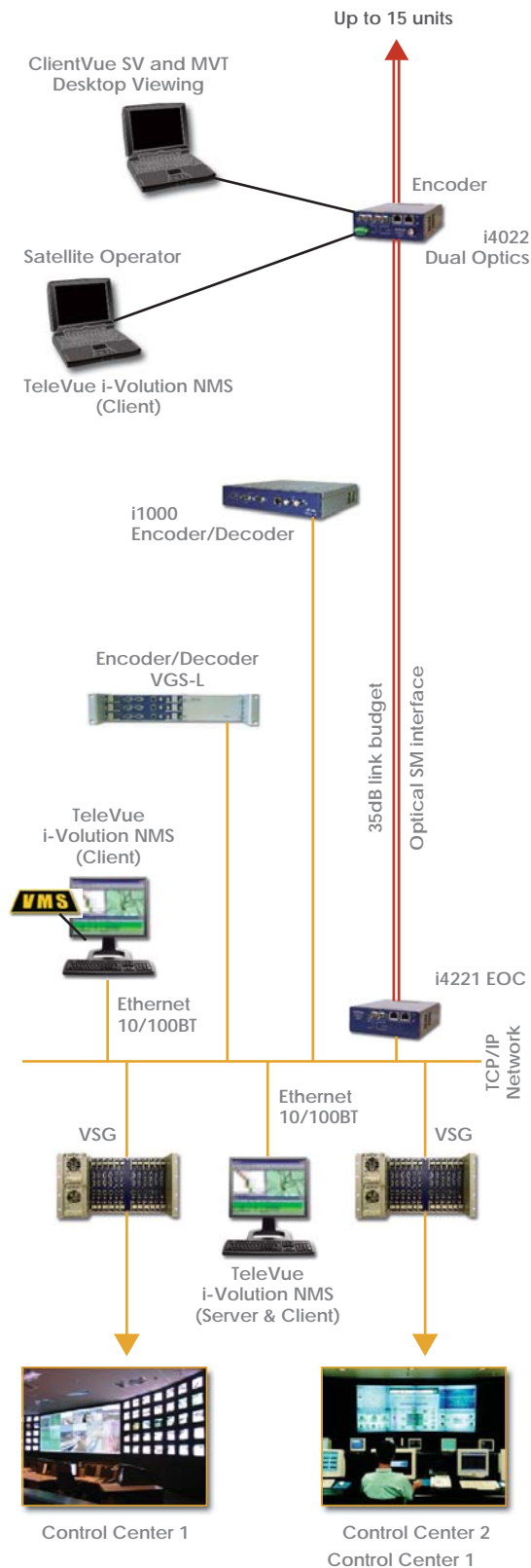


Distributed Network Management & Control

i-Volution NMS can be deployed anywhere in the network to extend remote management capabilities. Its advanced Client/Server architecture supports both local and remote maintenance activities and/or distribution of NMS functionality across a network.



TeleVue™ i-VOLUTION™ NMS



Centralized and Remote Management & Control

Management of i-Volution Equipment Settings

- Video Bit Rate
- Video Compression Type
- Resolution & Image Adjustment (Contrast, Brightness, Hue and Color level)
- On-Screen Character Display (OSD)
 - (4) fields for Site Identification, Date, Time & Technical Support Assistance
 - Selected On-Screen Quadrant, Color, Blending & Function
- Motion Detection Sensitivity
- Camera, Monitor and Contact Sense & Closure Naming Convention
- IP Network Parameters
- Low Speed Serial Data Bit Rate & Interface Selection
- Time Server Management

Remote Configuration & Control of i-Volution Equipment

Via TeleVue NMS Client Application (Maximum of 10 Client Stations)

Real-time Diagnostic & Monitoring Capabilities

Monitoring of i-Volution Equipment in Network

- Event & Alarm Management with Color-coded records
- Color-coded Network Element Icons
- System Event Logging of Network Activity

Graphical Representation of i-Volution Network

- Explorer View by Network Element
- Explorer View by Site
- Display Site by Location on GIS, BMP, or JPEG Maps

Online Help Facility

Auto Discovery of i-Volution Equipment in Network

Remote Management via Network or Dial-in Access

Automatic Report Generation (Asset Management)

- Equipment Inventor by Card, Unit, Chassis, Site, or System wide
- Selectable Report Details : Serial Number, Hardware/Software Identification, Configuration, Status

Contact Sensor & Closure Response Management (Product Specific)

SNMP Compliance with standards-based Network Management Systems (NMS)

- Support concurrent & co-operative management with 3rd Party NMS
- Network configuration changes by 3rd Party NMS are reflected in i-Volution NMS & vice-versa

Minimum PC Specifications for Multi-Video Support

Processor	Intel Pentium III 500 Mhz (1GHz Processor recommended)
Memory	128 MB RAM (256 MB RAM recommended)
Hard Disk Capacity	Minimum (free) hard disk space: 10 GB
CD-ROM	16X or better
Monitor	SVGA - Minimum Resolution: 1024 x 768 pixels
Video Adaptor	SVGA - Minimum Color Palette: 32768 Colors
Input Devices	PS/2 Mouse or equivalent
Network Interface	Ethernet - 10/100 Mbps (Full Duplex)
Operating System	Windows 2000 (Service Pack 3 or better) or Windows XP (Service Pack 1 or better)



Impath Networks Canada Corporation 42 Payzant Avenue, Suite 100, Halifax, NS Canada B3B 1Z6
T: 902-468-1010 F: 902-468-1044 impathnetworks.com

Impath Networks Ltd. 9 Camelot Drive, Suite 100, Ottawa, ON Canada K2G 5W6
T: 613-226-4000 F: 613-226-4602 impathnetworks.com

Copyright 2008 Impath Networks Canada Corporation. Impath is a registered trademark of Impath Networks Canada Corporation. TeleVue, ClientVue and i-Volution are trademarks of Impath Networks Canada Corporation. All other trademarks are those of their respective owners. Printed in Canada - 10/08. Specifications subject to change without notice or obligation. 13mbr_136_100_nms_09.pdf