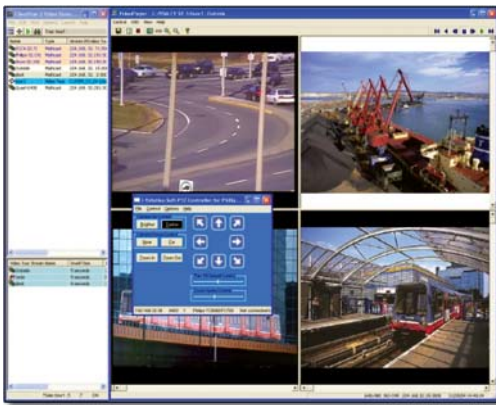


ClientVue™ MVT

DISTRIBUTED VIDEO ACCESS

The i-Volution series of Video-over-IP products delivers outstanding performance for advanced surveillance applications requiring high resolution, full motion video. ClientVue MVT, a software-based viewing application, decodes i-Volution MPEG video streams over standard IP networks for display on PC workstation. Users have the flexibility to select any video stream from any location within the network, for display/recording on their desktop or portable PC. ClientVue MVT comprises a real-time MPEG video player and intuitive Video Stream Manager for advanced video selection, management and control.



ClientVue MVT
Video Desktop Viewer & Touring

- i-Volution MPEG-1 & MPEG-2 Video Decoding
- Full Screen Viewing with Dual Monitor Support
- Intuitive Video Selection Menu
- On-Demand Video Switching
- User-defined Video Tours with Bit Map Insertion
- Drag & Drop Video Controls
- On-Screen-Display with Text & Graphics Overlay
- Support of i-Volution Video Streams with OSD
- Digital Video Pan & Zoom
- Integral Camera PTZ Support with Joystick Control
- Local Recording and Playback
- Optional Support for International Character Sets

i-Volution Video-over-IP Products

- i1000 Encoders & Decoders
- i1200 Multimedia Encoder and Decoder
- i1400 Quadrimedia Encoders
- i4000 Series Encoders
- VSG & VSG-L Video Surveillance Gateway
- i-Volution NMS

Applications

ClientVue MVT delivers high quality video to your PC over standard IP networks. Images are decoded in real-time providing full motion DVD quality video for centralized and/or distributed surveillance applications including incident management, central/remote monitoring and security access control.

ClientVue MVT can also be used as an effective management tool for monitoring day-to-day business operations, as well as assisting in the provisioning and maintenance of distributed network video systems.

Distributed Video Access

ClientVue MVT eliminates the need for traditional NTSC/PAL monitors by providing high quality video to network PC's, regardless of location. This flexibility is ideal for distributed monitoring of video from any location within the IP network.

MPEG Video Player - Multiple Video Support

The ClientVue MVT Video Player is optimized for viewing multiple real-time MPEG-2 images on your desktop. The number of viewing windows is limited by the performance of the PC and its video adapter card. ClientVue MVT supports from 1 to 16 concurrent video streams pending the network application.

Video Touring/Sequencing

Video sources within a network often exceed the number of surveillance monitors available. As such, Video Touring or Sequencing is the traditional methodology used for viewing more video sources than available displays. ClientVue MVT provides maximum flexibility via support of user-programmable Video Tours with variable dwell times. This advanced capability allows for an unlimited number of video tours and video sources to be supported.

Video Stream Manager - Video Selection & Control

Using the Video Stream Manager, the network administrator can customize the play lists of video sources (cameras) for each user, to control access if required. IP Multicast support ensures that multiple authorized users can view video concurrently.

Video Recording & Playback

ClientVue MVT has integral recording capability to allow real-time viewing and simultaneous digital archiving of video, based on time, file size, or continuous recording. Video can be recorded locally or to a network hard drive. Recorded videos may be replayed on the local PC or exported to another PC for distributed viewing.

High Performance - Low Latency

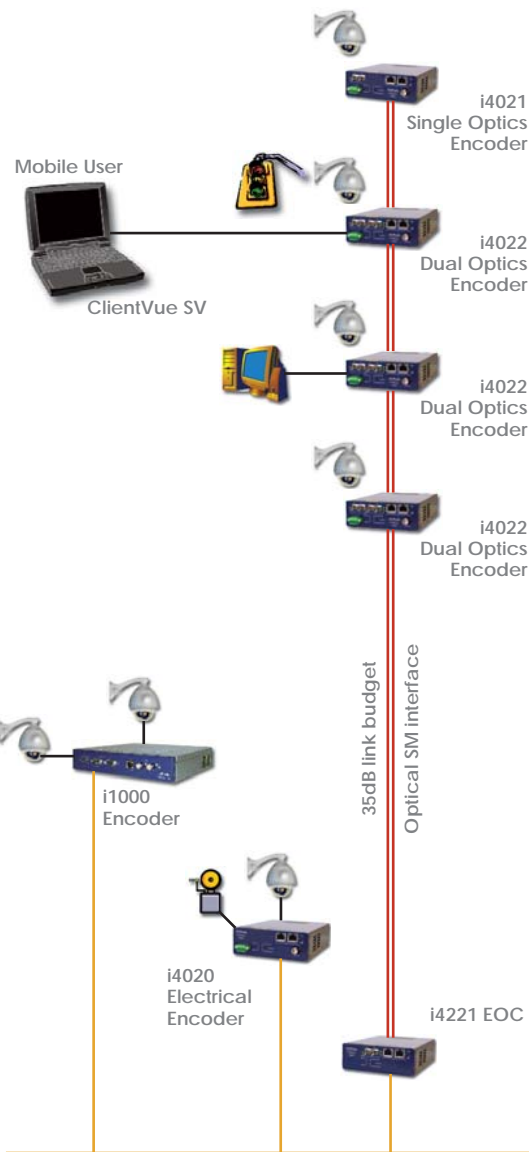
ClientVue MVT is optimized for MPEG-2 to provide high resolution, full motion video to the desktop. ClientVue MVT leverages the inherent benefits of IP networks to allow video streams to be displayed with minimal latency.

Standards Compliant

ClientVue is built on Open Standards in support of Impath Networks' ongoing commitment to multivendor interoperability.

ClientVue™ MVT

DISTRIBUTED VIDEO ACCESS



Network Interface

Via PC Ethernet NIC - Full Duplex

Protocol

TCP, UDP, IPv4, IGMPv2, RTP, SAP

Network Interface

Format

MPEG-1 (ISO/IEC11172-2)
 MPEG-2 (ISO/IEC 13818-1 Transport Stream) MP@ML
 MPEG-2 (ISO/IEC 13818-2 Elementary Stream) MP@ML

Bit Rate
 Resolution
 Full
 HHR
 SIF
 QSIF
 Latency

128 kbps to 12 Mbps
NTSC
 720 x 480
 352 x 480
 352 x 240
 192 x 128
 < 300ms

PAL
 720 x 576
 352 x 576
 352 x 288
 160 x 128

Video Decoding Parameters

User selectable I, IP, or IPB frames

Decoding adjustment

None - Decoder automatically detects incoming MPEG 1 or MPEG-2 Transport or Elementary stream

Video Player Window Resolution

Auto adjust to incoming video stream resolution or User Selectable

Maximum Number of Videos (1-16)

PC and/or software license dependant. Typically, 4 video streams at full resolution @ 6 Mbps can be decoded on the recommended PC platform. Available options support from 1 to 16 concurrent video streams

Video Recording

Video File Control
 Video Playback

Continuous loop, or User defined
 User selectable limits file size and recording time
 MPEG-2 with (mpg, mpeg) file extension

Video Touring / Sequencing

Unlimited

On Screen Display

Customizable Video Player OSD - 4 lines of user text plus time and date stamp - Bitmap (.bmp) overlay
 Enable/Disable display of i-Volution encoded OSD

Digital Pan and Zoom

Digital pan and zoom within the image window using mouse or keyboard commands

Drag and Drop Video Control

Start video or tours via simple Drag and Drop from live video play list or recorded video files name into windows

Integral Camera PTZ Support

Philips TC8560/TC700; Pelco D & P; Vicon; Ultrack; Cohu; NTCIP & other protocols can be integrated on request

Integral Joystick PTZ Control

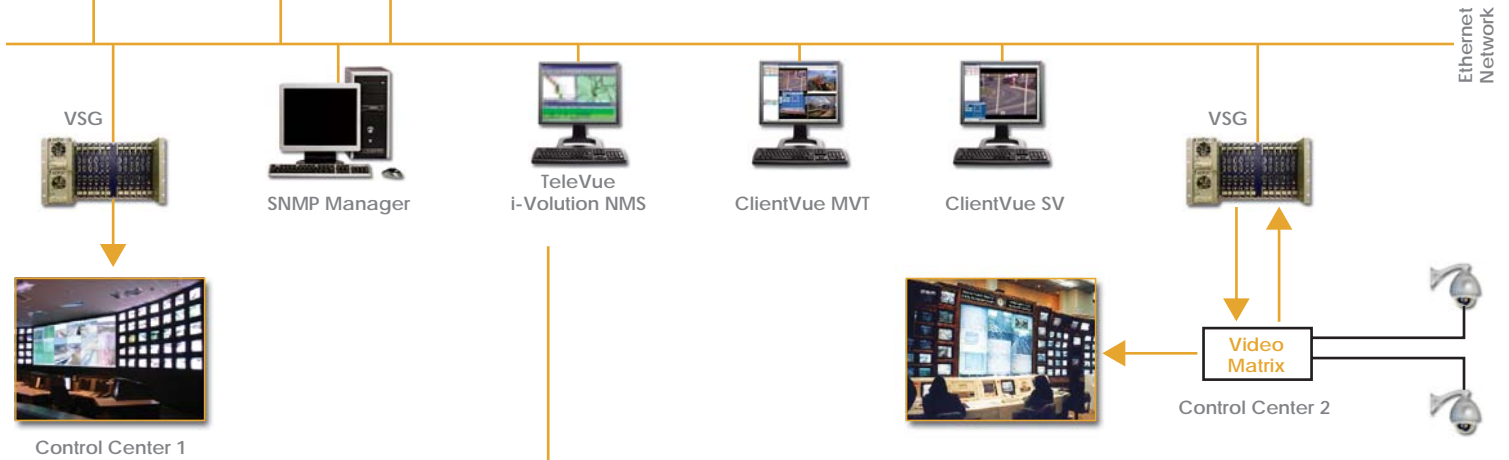
Compatible with standard USB joystick

Minimum PC Specifications for Multi-Video Support

Processor
 Motherboard
 Memory
 Hard Disk Capacity
 CD-ROM
 Monitor
 Video Card

Intel Pentium IV 2.8 GHz or better with hyper threading
 Support AGP 4X or higher
 512 MB RAM or better
 Minimum (free) hard disk space: 3MB
 16X or better
 SVGA - Minimum Resolution: 1024 x 768 pixels
 DirectX 9.0 with 3D accelerator H/W
 Minimum 128 MB of RAM
 PS/2 Mouse or equivalent
 Ethernet - 10/100 Mbps (Full Duplex)
 Windows 2000/XP with DirectX® 9.0b or later installed

Input Devices
 Network Interface
 Operating System



Impath Networks Canada Corporation 42 Payzant Avenue, Suite 100, Halifax, NS Canada B3B 1Z6
 T: 902-468-1010 F: 902-468-1044 impathnetworks.com

Impath Networks Ltd. 9 Camelot Drive, Suite 100, Ottawa, ON Canada K2G 5W6
 T: 613-226-4000 F: 613-226-4602 impathnetworks.com

Copyright 2008 Impath Networks Canada Corporation. Impath is a registered trademark of Impath Networks Canada Corporation. TeleVue, ClientVue and i-Volution are trademarks of Impath Networks Canada Corporation. All other trademarks are those of their respective owners. Printed in Canada - 10/08. Specifications subject to change without notice or obligation. 12mbr_145_100_clientvue_mvt_09.pdf